

PROVIDING A SAFE RIDING EXPERIENCE – KN95 MASKS FOR PATIENTS

Dear Patient,

With the increasing rates of COVID-19 cases within the Community, Gila River Health Care is providing all riders with a KN95 mask and requesting that they be worn during transports.

When should I wear a KN95 mask?

Just prior to entering the vehicle, during medical appointment(s), dialysis treatment, and when indoors in public buildings.

How do I put on a KN95 mask?

- If possible, wash or sanitize your hands immediately before and after putting your KN95 on and immediately before and after taking it off when planning to reuse it.
- Unfold your mask and flatten the metal nose clip.
- Place the mask over your face, with the bottom below your chin and the nosepiece up.
- Place the straps of the mask over each of your ears.
- Adjust the metal nose clip using fingers from both hands to mold the clip to the shape of your nose.
- Adjust fit as necessary to reduce air flow around the mask.



How long do I need to wear the KN95 mask?

For the duration of your ride, medical appointments, or dialysis treatment. Also, when you go indoor any public facility. The KN95 can be reused 5-7 days per reuse guidelines listed on the back.

Can I reuse this mask? See attached

Yes, instructions for caring for and reusing the KN95 mask are on the back of this card

Thank you in advance for your cooperation as we work to ensure your safety with GRHC's services.

1

Store masks that are not wet or dirty in a paper bag

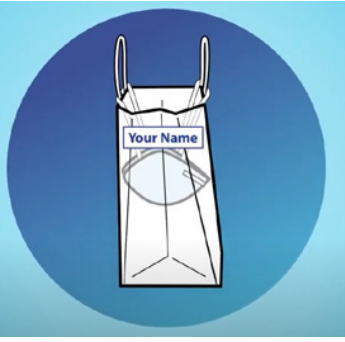


You can store your mask temporarily to reuse later. Remove your mask correctly and wash your hands after touching a used mask. Keep it in a dry, breathable bag (like a paper or mesh fabric bag) to keep it clean between uses. When reusing your mask, keep the same side facing out.

If you are taking off your mask to eat or drink outside of your home, you can place it somewhere safe to keep it clean, such as your pocket, purse, or paper bag. Make sure to wash or sanitize your hands after removing your mask. After eating, put the mask back on with the same side facing out. Be sure to wash or sanitize your hands again after putting your mask back on.

After properly removing your mask by the straps, carefully place it in a paper bag with the inside of the mask facing up to allow the mask to “breathe”. Avoid touching the inside of the mask

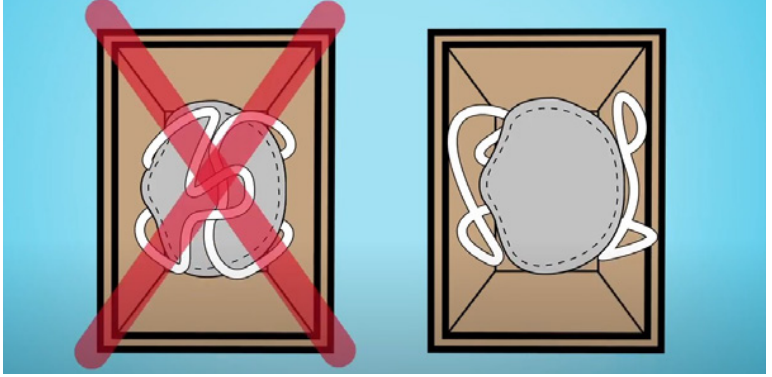
2



Ensure your paper bag is labeled with your name to avoid cross contamination

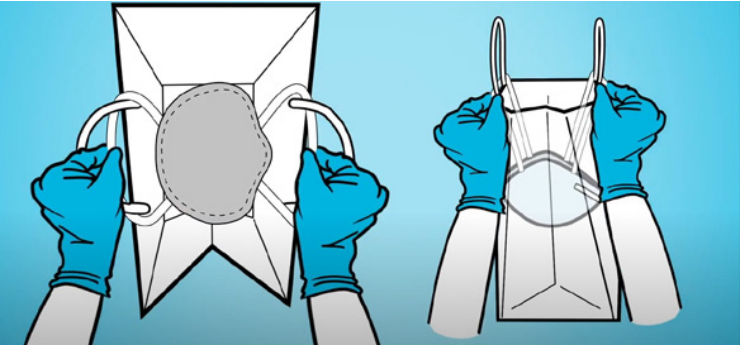
Perform hand hygiene after putting your mask in your bag

3



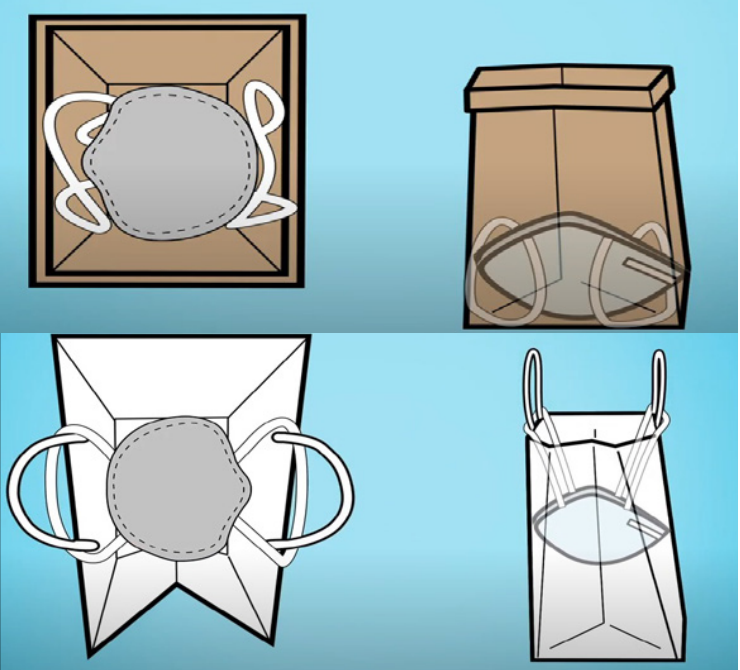
If there are no handles on your paper bag, place your mask face-down, inside facing up and straps on the outside of the mask, avoid having the straps touch the inside of the mask.

4



If there are handles on your bag, hold the mask by the straps and place the straps on the outside of the handles. Inside of the mask should be facing up, avoid touching the middle of the mask

5



Store your paper bag with your mask in a clean dry area to avoid contamination.

If your mask is visibly soiled or damaged, please discard and get a new mask

When should I discard my KN95?

You should replace your KN95 when it:

- Becomes soiled
- No longer covers the nose and mouth
- Has stretched out or damaged ties or straps
- Cannot stay on the face
- Has holes or tears in the fabric
- A KN95 may be disposed of in the normal trash

For more information, please call (520) 562-3321 ext. 1384