



# What is a SANE or Forensic Nurse?

## SANE stands for Sexual Assault Nurse Examiner

This title is a little deceiving, as SANE's also do medical forensic exams for victims of domestic or interpersonal violence, strangulation, abuse, neglect, and trafficking, as well as suspect exams. Our SANE team does acute as well as delayed disclosure medical forensic exams. Even if it has been several years, we still want to see all victims!



We also provide services for adults who do not want law enforcement involved. We have many options available to help victims of these crimes even if they don't want to make a formal report. We can provide an exam, STI prophylaxis or treatment. The exception to this obviously, is any case that would be a mandatory report. (Minors, children.)



A SANE or Forensic Nurse is a Registered Nurse who is specially trained to provide comprehensive care to victims of trauma/violence and who demonstrates competency in performing a medical forensic exam. A SANE/Forensic Nurse is specifically trained to identify and document injuries caused by trauma. A SANE has knowledge of the neurobiology of trauma – basically the effects of trauma on the brain.



This allows the SANE to provide quality trauma informed care for each patient.



Gila River  
HEALTH CARE

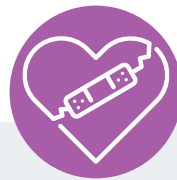
For more information,  
please contact us at:  
**SANE Clinic at 520-562-5151**  
or email [sane@grhc.org](mailto:sane@grhc.org)

# Potential Indicators of Sexual Abuse



## Physical indications:

- Sleep disturbances
- Bedwetting
- Pain or irritation in genital area
- Difficulty walking or sitting
- Difficulty urinating
- Pregnancy
- Positive testing for sexually transmitted infection or HIV
- Excessive or injurious masturbation
- Excessive fear of being touched
- Refusal to go to a certain place or be with a certain person
- Clinging, whining
- Increase in physical complaints
- Excessive bathing
- Reluctance to undress for physical education classes



## Behavioral indications:

- Sexually promiscuous, or inappropriate sexual behavior
- Developmental age-inappropriate sexual play and/or drawings
- Fear of being alone
- Regression to more infantile behavior such as wetting, thumb-sucking, fecal soiling
- Change in appetite, eating disorders
- Cruelty to others
- Cruelty to animals
- Acting out and attention getting behavior such as shoplifting, stealing, fire setting
- Anxious
- Withdrawn, isolation from peers – or other changes in behavior
- Grades in school may drop, difficulty concentrating & learning
- Alcohol / drug abuse
- Attraction to older men or dislike of men
- Chronic running away
- Poor self-image – reflected in dress, cleanliness, appearance
- Depression, physical self-abuse, suicide attempts / threats