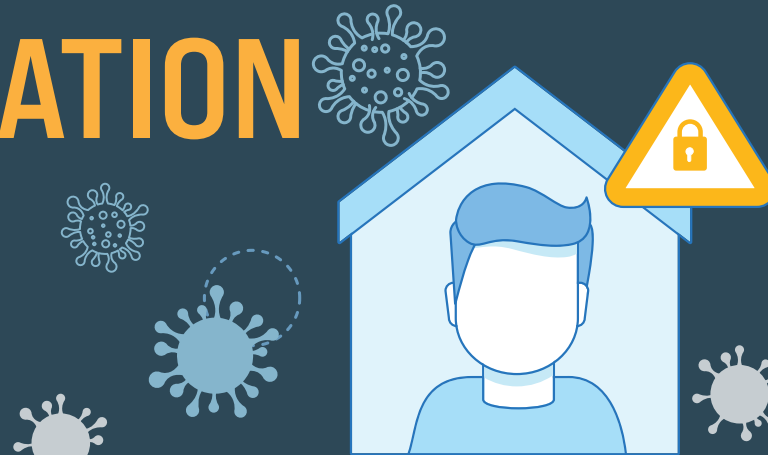




Gila River
HEALTH CARE

COVID-19 ISOLATION GUIDANCE

November 23, 2022



Home Isolation Guidance for People Who Test Positive or Have Symptoms Consistent with COVID-19*

If you test POSITIVE for COVID-19, you need to isolate at home for at least five days.

Wear well-fitting mask for a total of 10 days from day of positive test.

*If you have COVID-19 symptoms, isolate at home and get tested by your medical provider.

**COVID-19 GENERAL
INFORMATION**



GRHC COVID-19 HOTLINE
(520) 550-6079



GRHC.ORG/HUB